

SD165Y-2

BULLDOZER



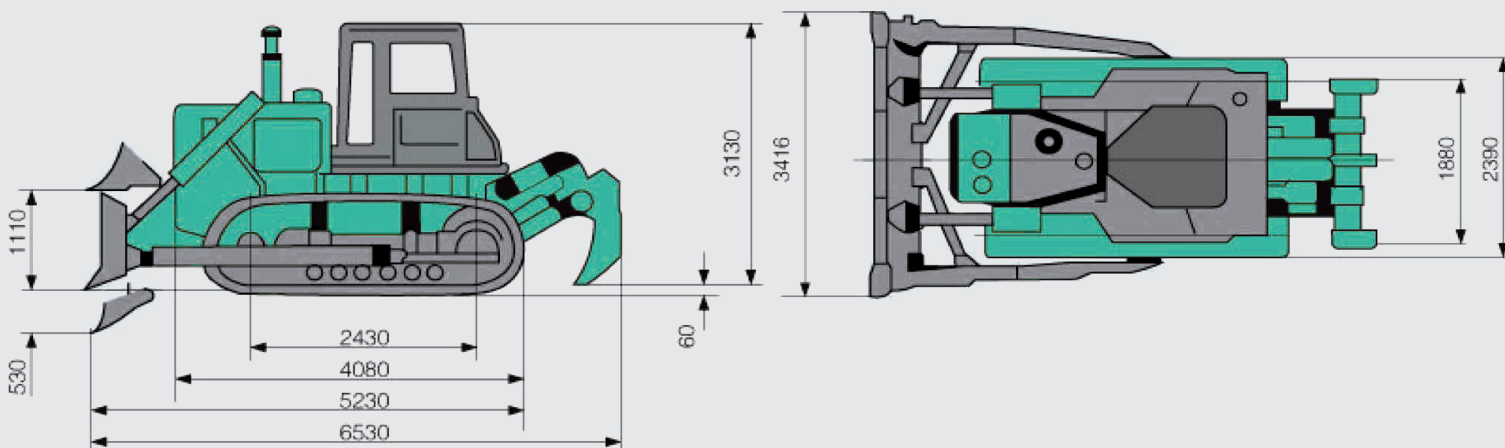
MAIN FEATURES

- Introduced KOMATSU D65A-8 Bulldozer technology, featuring high performance capacity, efficiency, safe and reliable in operation.
- Optional attachments: straight-tilt blade, angle blade, U-blade, rops cab, canopy, 3-shank ripper, air conditioner, 510mm track shoes, 610mm track shoes.
- Widely used in building infrastructure and industry including large mining area, port, power plant, road building etc.
- Awarded the ISO9001:2015 System Certificate

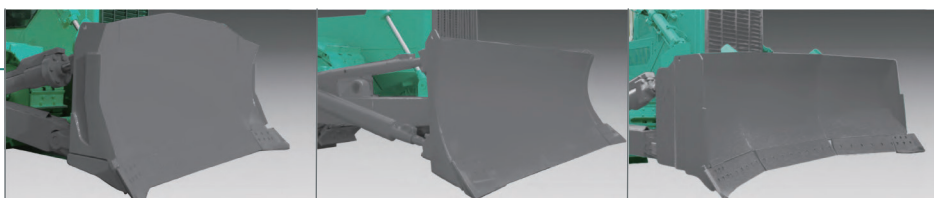
Engine	Rated Power	Weight
Weichai WD10G178E25	131kW	16900kg



SD165Y-2

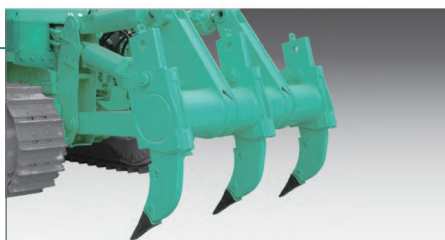


Work Equipment



Blade Type	Straight Tilt Blade	Angle	U dozer
Width x Height (mm)	3416 x 1145	3970 x 1037	4064 x 1386
Max.Lift above Ground (mm)	1110	1095	1095
Max.Drop below Ground (mm)	530	545	545
Pitch Adjustment (°)	55	55	55
Max. Tilt (mm)	≥860	≥400	≥400
Blade Capacity (m ³)	4.5	4.3	8.6

Ripper



Type	Single Ripper
Max. dig below ground (mm)	572
Max. lift above ground (mm)	702
Weight (kg)	1700

Engine	
Model	Weichai WD10G178E25
Type	Straight vertical, four-stroke, water-cooling, PT pump injection, turbocharged
Rated Power (kW)	131
Rated speed (r/min)	1850
Number of Cylinders-bore x Stroke (mm)	6 - Φ 126 x130
Starting Method	Starting motor 24V 5.5kW
Battery	24V (12V x 2)
Air Cleaner	Dry horizontal type with precleaner
Min Fuel Consumption Ratio(min)	215

Transmission	
Torque Converter	3-element, single-stage, single-phase
Gearbox	Planetary gear, multiple-disc clutch, hydraulic actuated, forced lubrication by gear pump, 3 forward and 3 reverse speeds
Bevel Gear	Helical bevel gear, Splash lubricated
Steering Clutch	Wet, Multiple-disc clutch, spring loaded, hydraulically released
Steering Brake	Wet, band brake, operated with hydraulic booster and valve inner linkage
Final Drive	Spur gear, double reduction, splash lubricated

Hydraulic System of Work Equipment	
Working Pressure (Mpa)	13.7
Rated Flow (L/min) (2000r/min)	250(at revolution of 1850rpm)
Pump	Gear pump 07441-67503
Control Valve	Hand-operated plunger servo controlling
Cylinder, Bore x Rod x Stroke (mm)	Φ 110 x Φ 65 x 1026

Track	
Type	Sealed, Single grouser
Track Pitch (mm)	203.2
Track Width (mm)	510
Number of Track Snoes(each side)	37
Length of Track on Ground (mm)	2430

Travel Speed (km/h)			
	1st	2nd	3rd
Forward	3.8	6.6	10.6
Reverse	4.9	8.5	13.6

Under Carriage	
Sprocket	Segmented
No. of Carrier Roller (each side)	2
No. of Track Rollers (each side)	6 (4 Single, 2 Double)
Track Tension	Hydraulic-adjusted

Floating seals are used in all sprockets, track rollers, carrier rollers and front idlers



Sunward intelligent equipment group was founded in 1999 under the leadership of Professor He Qinghua of Central South University. It started with a revolutionary and innovative product - Hydrostatic pile driver, Now it has developed into a listed company - Sunward Intelligent Equipment Co., Ltd. as the core (Stock Code: 002097), an international enterprise group with Changsha as its headquarters and certain influence at home and abroad. With total assets of 18 billion yuan, the company is one of the leading enterprises of underground engineering equipment in China, one of the top 50 global construction machinery manufacturers, the top 20 world excavator enterprises and the top 3 global regional aircraft leasing enterprises.

In accordance with the company's policy of continuous product improvement, we reserve the right to change the parameters and design without prior notice to end-user. The illustrations in the product manual are not necessarily the standard style of the equipment, and Sunward intelligent equipment group reserves the right of final interpretation.

SUNWARD

SUNWARD INTELLIGENT EQUIPMENT CO., LTD

Add: Sunward Industrial Park, No. 1335 Liangtang Road (E), Xingsha, Changsha, Hunan, China